



Sample Hempettes Original G1520-200

Sample ID:	BBL_2414	Matrix:	Flower	Analyses Executed:	Full Panel
Company:	Wild Hempettes	Batch ID:	Original G1520-200	Reported:	08 Apr, 2022
Phone:		Received:	30 Mar, 2022		
Address:	2861 Congressman Ln. Dallas, TX 75220				
Email:	info@wildhempette.com				

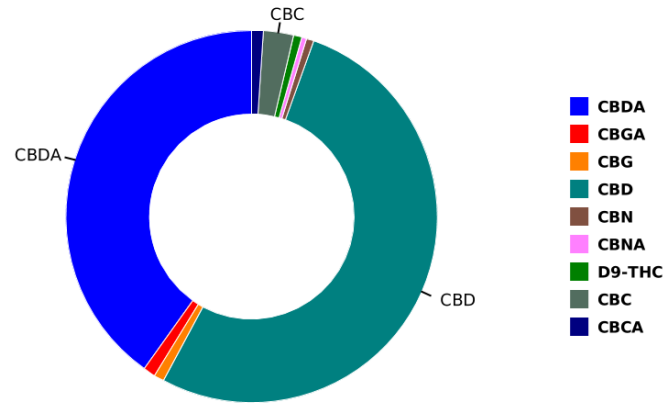
Lab Notes: Results reported for sample as received

Cannabinoid Profile Analysis

Analyzed 01 Apr, 2022 | Instrument HPLC-PDA | Method TM-101
 Uncertainty Measurement at 95% confidence level is 10%, k=2

Analyte	LOD (ppm)	LOQ (ppm)	Result %	Result (mg/g)	mg/pack	mg/unit
Cannabidivarinic acid (CBDVa)	0.030	0.080	<LoQ	<LoQ	<LoQ	<LoQ
Cannabidivarin (CBDV)	0.050	0.150	<LoQ	<LoQ	<LoQ	<LoQ
Cannabidiolic acid (CBDA)	0.040	0.110	3.9188	39.19	783.76	39.19
Cannabigerolic acid (CBGa)	0.040	0.120	0.1041	1.04	20.82	1.04
Cannabigerol (CBG)	0.080	0.230	0.0877	0.88	17.54	0.88
Cannabidiol (CBD)	0.060	0.190	5.1134	51.13	1022.68	51.13
Tetrahydrocannabivarin (THCV)	0.080	0.240	ND	ND	ND	ND
Tetrahydrocannabivarinic acid (THCVa)	0.050	0.160	ND	ND	ND	ND
Cannabinol (CBN)	0.040	0.120	0.0608	0.61	12.16	0.61
Cannabinolic acid (CBNa)	0.080	0.250	0.0418	0.42	8.36	0.42
D9-Tetrahydrocannabinol (D9-THC)	0.120	0.360	0.0719	0.72	14.38	0.72
D8-Tetrahydrocannabinol (D8-THC)	0.140	0.430	ND	ND	ND	ND
Cannabicyclol (CBL)	0.210	0.640	ND	ND	ND	ND
D9-Tetrahydrocannabinolic acid (THCa)	0.130	0.400	ND	ND	ND	ND
Cannabichromene (CBC)	0.090	0.280	0.2523	2.52	50.46	2.52
Cannabichromenic acid (CBCa)	0.350	1.060	0.0997	1	19.94	1
Total THC (THCa * 0.877 + THC)			0.07	0.07		
Total CBD (CBDA * 0.877 + CBD)			8.55	85.5		
Total CBG (CBGa * 0.877 + CBG)			0.18	1.79		
Total Cannabinoids			9.75	97.5		

Sample Photography



Total weight: 20.0000 g, Unit weight: 1.0000 g

NR Not Reportable
 ND Not Detected
 N/A Not Applicable
 NT Not Tested
 LOD Limit of Detection
 LOQ Limit of Quantification
 <LOQ Detected
 >ULOL Above upper limit of linearity
 CFU/g Colony Forming Units per 1 gram
 TNTC Too Numerous to Count



Scan the QR code to verify authenticity.

Authorized Signature

Dr. Archana R. Parameswar,
 Laboratory Director
 08 Apr, 2022 01:45:23 PM



FVI - Filth & Foreign Matter Inspection

Analyzed | Instrument Microscope | Method TM-108

Analyte Name	Result
> 1/4 of the total sample area covered by sand soil cinders or dirt	Negative
> 1/4 of the total sample area covered by mold	Negative
> 1 insect fragment 1 hair or 1 count mammalian excreta per 3g	Negative
> 1/4 of the total sample area covered by an imbedded foreign material	Negative

HME - Heavy Metals Detection Analysis

Analyzed 07 Apr, 2022 | Instrument ICP-MS | Method TM-105

Analyte	LOD (ppb)	LOQ (ppb)	Result ug/g	Flag	Limit ug/g
Arsenic (As)	0.005	0.015	0.03		
Cadmium (Cd)	0.005	0.016	0.11		
Mercury (Hg)	0.004	0.013	0.03		
Lead (Pb)	0.075	0.224	0.09		

MIB - Microbial Testing Analysis

Analyzed 08 Apr, 2022 | Instrument Plating | Method Subcontracted

Analyte	Limit (CFU/g)	Result CFU/g	Flag
E. Coli	ND per 1 gram	0	
Staphylococcus aureus	ND per 1 gram	0	
Salmonella SPP	ND per 1 gram	0	
Yeast & Mold	ND per 1 gram	0	
Aspergillus	ND per 1 gram	0	

MWA - Moisture Content & Water Activity

Analyzed 31 Mar, 2022 | Instrument Water Activity Meter | Method TM-107

Analyte	Results	Flag	Limit
Water Activity (aW)	0.4668		0.85
Moisture (%)	6.47		

NR Not Reportable
 ND Not Detected
 N/A Not Applicable
 NT Not Tested
 LOD Limit of Detection
 LOQ Limit of Quantification
 <LOQ Detected
 >ULOL Above upper limit of linearity
 CFU/g Colony Forming Units per 1 gram
 TNTC Too Numerous to Count



Scan the QR code to verify authenticity.

Authorized Signature

Dr. Archana R. Parameswar,
 Laboratory Director
 08 Apr, 2022 01:45:23 PM



MTO - Mycotoxin Testing Analysis

Analyzed 08 Apr, 2022 | Instrument LC-MS/MS | Method TM-104

Analyte	LOD (ppb)	LOQ (ppb)	Result ug/kg (ppb)	Flag	Limit ug/kg
Mycotoxin B1	0.000	0.010	N D		
Mycotoxin B2	0.010	0.030	N D		
Mycotoxin G1	0.010	0.020	N D		
Mycotoxin G2	0.010	0.040	N D		
Ochratoxin A	0.020	0.060	N D		
Total Mycotoxins			N D		

PES - Pesticides Screening Analysis

Analyzed 08 Apr, 2022 | Instrument LC-MS/MS | Method TM-103

Analytes	LOD (ppb)	LOQ (ppb)	Result ug/g	Flag	Limit ug/g
Abamectin	0.110	0.330	N D		
Acephate	0.230	0.700	N D		
Acequinocyl	0.110	0.320	N D		
Acetamiprid	0.020	0.050	N D		
Aldicarb	0.020	0.050	N D		
Azoxystrobin	0.020	0.060	N D		
Bifenazate	0.010	0.030	N D		
Bifenthrin	0.020	0.060	N D		
Boscalid	0.060	0.170	N D		
Carbaryl	0.010	0.040	N D		
Carbofuran	0.010	0.020	N D		
Chlorantraniliprole	0.010	0.030	N D		
Chlorpyrifos	0.010	0.030	N D		
Clofentezine	0.010	0.040	N D		
Coumaphos	0.040	0.120	N D		
Cyfluthrin	2.320	7.020	N D		
Cypermethrin	0.370	1.130	N D		
Daminozide	0.550	1.650	N D		
Dichlorvos	0.050	0.140	N D		
Dimethoate	0.010	0.020	N D		
Dimethomorph	0.010	0.030	N D		
Ethoprophos	0.020	0.050	N D		
Etofenprox	0.010	0.040	N D		
Etoxazole	0.010	0.020	N D		
Fenhexamid	0.040	0.140	N D		
Fenoxycarb	0.020	0.060	N D		
Fenpyroximate	0.010	0.040	N D		
Fipronil	0.010	0.040	N D		
Fludioxinil	0.020	0.050	N D		
Flonicamide	0.010	0.030	N D		
Hexythiazox	0.010	0.020	N D		
Imazalil	0.060	0.170	N D		

NR Not Reportable
 ND Not Detected
 N/A Not Applicable
 NT Not Tested
 LOD Limit of Detection
 LOQ Limit of Quantification
 <LOQ Detected
 >ULOL Above upper limit of linearity
 CFU/g Colony Forming Units per 1 gram
 TNTC Too Numerous to Count



Scan the QR code to verify authenticity.

Authorized Signature

Dr. Archana R. Parameswar,
 Laboratory Director
 08 Apr, 2022 01:45:23 PM

Bluebonnet Labs Certificate of Analysis

2567 Valley View Ln, Dallas, TX 75234, United States | TX Registration #: TL2020031

DEA #: RP0607436 | ISO/IEC 17025:2017 Certificate #: 6400.01



Bluebonnet Labs

Analytes	LOD (ppb)	LOQ (ppb)	Result ug/g	Flag	Limit ug/g
Imidacloprid	0.040	0.110	N D		
Kresoxim-methyl	0.020	0.050	N D		
Malathion	0.010	0.030	N D		
Metalaxyl	0.010	0.020	N D		
Methiocarb	0.010	0.030	N D		
Methomyl	0.020	0.050	N D		
Mevinphos	0.060	0.180	N D		
Myclobutanil	1.190	3.610	N D		
Naled	0.030	0.080	N D		
Oxamyl	0.020	0.050	N D		
Paclobutrazole	0.020	0.060	N D		
Permethrin	0.080	0.260	N D		
Phosmet	0.010	0.030	N D		
Piperonyl butoxide	0.010	0.040	0.39		
Prallethrin	0.100	0.300	N D		
Propiconazole	0.070	0.220	N D		
Propoxur	0.010	0.030	N D		
Pyrethrin-I	0.020	0.060	N D		
Pyridaben	0.010	0.020	N D		
Spinetoram	0.230	0.690	N D		
Spinosyn A	0.010	0.020	N D		
Spinosyn D	0.000	0.010	N D		
Spiromesifen	0.050	0.140	N D		
Spirotetramat	0.010	0.030	N D		
Spiroxamine	0.010	0.030	N D		
Tebuconazole	0.010	0.030	N D		
Thiachloprid	0.010	0.030	N D		
Thiamethoxam	0.010	0.040	N D		
Trifloxystrobin	0.010	0.030	N D		
Diazinon	0.010	0.040	N D		2.6
Methyl parathion	0.050	0.140	N D		0.05
Chlorfenapyr	0.830	2.530	N D		0.83
Chlordane	0.740	2.250	N D		0.74
Pentachloronitrobenzene	0.060	0.170	N D		0.1

NR Not Reportable
 ND Not Detected
 N/A Not Applicable
 NT Not Tested
 LOD Limit of Detection
 LOQ Limit of Quantification
 <LOQ Detected
 >ULOL Above upper limit of linearity
 CFU/g Colony Forming Units per 1 gram
 TNTC Too Numerous to Count



Scan the QR code to verify authenticity.

Authorized Signature

Dr. Archana R. Parameswar,
 Laboratory Director
 08 Apr, 2022 01:45:23 PM

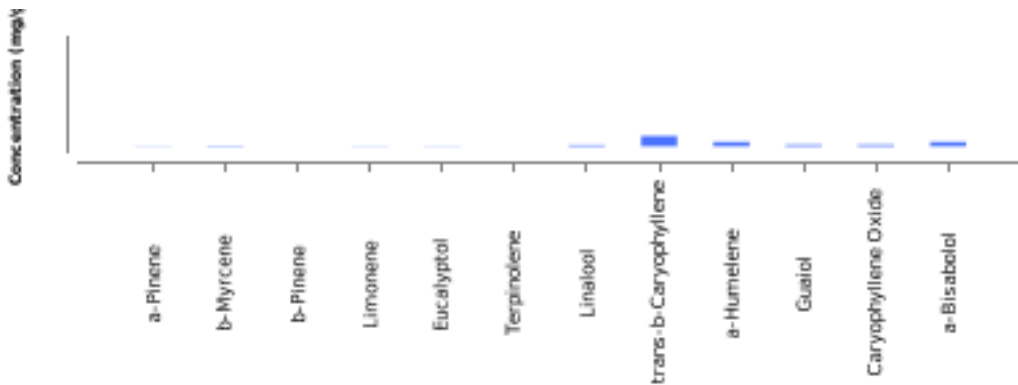
*This report shall not be reproduced except in full, without the written approval of the lab. This report is for informational purposes only and should not be used to diagnose, treat or prevent any disease. Results are only for samples and batches indicated. Results are reported on an "as received" basis, unless indicated otherwise.
 All required LQC (Laboratory Quality Control) samples were included in the performance of these analyses and met the acceptance criteria for ISO/IEC Regulations.



TER- Terpenes Analysis

Analyzed 07 Apr, 2022 | Instrument HS-GC/MS | Method TM-102

Analyte	LOD (ppm)	LOQ (ppm)	Result %	Result mg/g
a-Pinene	0.840	2.540	0	0.01
Camphene	0.940	2.850	N D	N D
b-Myrcene	1.080	3.260	0	0.03
b-Pinene	1.110	3.380	0	4.798E-4
3-Carene	0.460	1.400	N D	N D
a-Terpinene	1.180	3.570	N D	N D
a-ocimene	0.240	0.710	N D	N D
Limonene	0.730	2.210	0	0.01
p-cymene	0.680	2.070	N D	N D
cis-b-Ocimene	0.680	2.050	N D	N D
Eucalyptol	1.500	4.530	0	0.01
γ-Terpinene	0.570	1.720	N D	N D
Terpinolene	0.970	2.950	0	3.794E-4
Linalool	1.830	5.550	0.01	0.06
Isopulegol	1.650	4.990	N D	N D
Geraniol	0.780	2.370	N D	N D
trans-b-Caryophyllene	0.910	2.760	0.05	0.53
α-Humulene	0.960	2.920	0.02	0.22
cis-Nerolidol	0.510	1.540	N D	N D
trans-Nerolidol	1.110	3.360	N D	N D
Guaiol	2.800	8.490	0.01	0.08
Caryophyllene Oxide	0.970	2.950	0.01	0.08
α-Bisabolol	2.500	7.560	0.02	0.22
Total Terpene Concentration			0.13	1.25



NR Not Reportable
 ND Not Detected
 N/A Not Applicable
 NT Not Tested
 LOD Limit of Detection
 LOQ Limit of Quantification
 <LOQ Detected
 >ULOL Above upper limit of linearity
 CFU/g Colony Forming Units per 1 gram
 TNTC Too Numerous to Count



Scan the QR code to verify authenticity.

Authorized Signature

Dr. Archana R. Parameswar,
 Laboratory Director
 08 Apr, 2022 01:45:23 PM